



THE  
NEW BARNET  
DAY NURSERY & PRE-SCHOOL  
— a Little Garden day nursery —



NURTURE, CARE, INSPIRE.

**Seeing children grow, play and learn is a wonderful thing. That's why our happy, vibrant nurseries are designed to give your child the best possible start in life.**

We give little ones everything they need to be content, confident, healthy and curious, to ready them for the next step in the adventure of their educational journey - whether they're building a den, painting a picture, learning about the weather or playing in the sand.

## CONTENTS

Welcome	4
Our Nursery	6
Our philosophy / What we offer	8
Our curriculum	10
The Important Stuff	12
Safety in the Nursery	14



# WELCOME

### A breath of fresh air

Little Garden is a unique collection of privately-owned, award-winning day nurseries, providing quality childcare and education for children aged 3 months to 5 years. With us, your child will enjoy inspiring educational activities indoors and out, all year round.

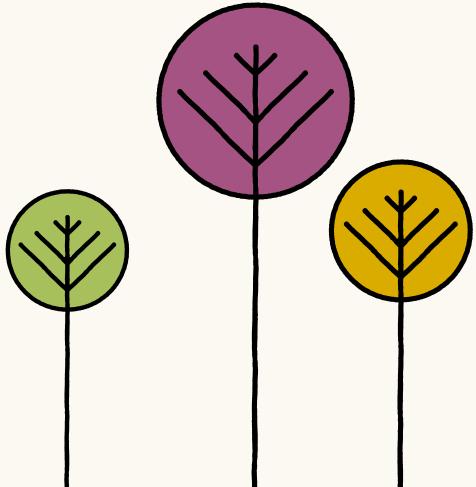
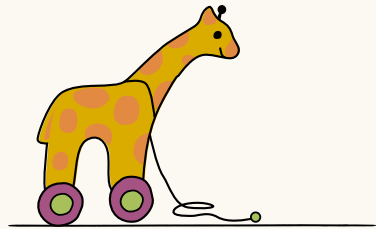
Each of our nurseries has a fabulous outdoor space (a rare thing in our London nurseries) giving children the chance to explore, have fun and learn in a safe, secure environment. You'll notice the difference as soon as you walk through our door.

### Together we're better

We're here to inspire the young minds of the future and make sure we give every child the chance to thrive in a lively, nurturing space full of opportunities to learn, play and have fun.

We believe the very best childcare comes from working closely with everyone involved in your child's care - from you and your family to our people, Early Years and Ofsted. So, our nurseries aren't just great places for little ones; they're lovely places to work and visit, too. A real home from home.

**Welcome to the Little Garden family.**



# OUR NURSERY

## The New Barnet

The New Barnet is a home from home nursery based in the North London suburb of Barnet benefitting from newly refurbished beautiful rooms and a large garden to the rear of the building.

Our team pride themselves on being a welcoming and friendly environment with staff always on hand to have a discussion with our families!

We strive for children to become confident learners and excel in their communication skills, so they are ready for their next step in school! We do this by offering a wide range of varied and exciting activities for our young minds. We strive to work holistically with the families so we can work to achieving the best for all the children in our setting.

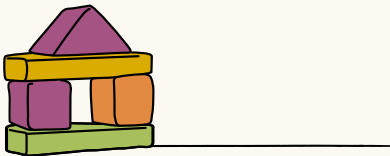
We look forward to welcoming you and showing you what our lovely nursery has to offer!



**Rebecca Lane**  
Nursery Manager



CARING FOR CHILDREN MEANS MEETING THEIR NEEDS AND DEVELOPING THEIR CONFIDENCE - SOCIALLY, EMOTIONALLY AND EDUCATIONALLY.



# OUR PHILOSOPHY

## What makes us different? Four things...

1 We're here because we truly care about children and what makes them tick. We're here to keep them safe physically and emotionally, whilst giving them the space to be curious and adventurous. Learning is fun and effortless through play and exploration.



2 We're called Little Garden, but our gardens are big and fun. Children can wander, climb, splash, run or just dream in our specifically designed outdoor classrooms, made for all weathers.

3 Our people are - gentle, fun and loving. They tend to stay with us because we care about them too.

4 Safety of the children and staff is paramount which is why we have CCTV cameras installed in all our nurseries.



## What we offer

A child's first step into nursery is also a first step to independence. That's why we're here to help every child:

- discover independence at their own pace through fun, stimulating, educational activities
- understand things like numbers, letters and social skills, and reach specific learning goals ahead of school
- learn through play in a space where every day is different and children are encouraged to try new things and be inquisitive
- make friends, care about and respect themselves, others and the world around them
- leave Little Garden fully equipped for their next steps in life - it's a big exciting world out there!

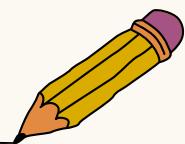


## OUR CURRICULUM

### The best start to your child's education

Our curriculum meets the government standard of the Early Years Foundation Stage (EYFS), but it's much more than that. It's a learning journey designed to help every child achieve their full potential. At the heart of the EYFS is the principle that children need to play in order to have fun, make friends and begin to learn and understand the world around them.

Our curriculum embraces that principle and provides children with a vibrant range of inspiring, play-based activities. We know that every child is unique and that they learn and develop at different rates and in different ways. We'll take your child on a learning journey tailored to their needs, not ours.



EACH OF OUR NURSERIES HAS A LOVELY FAMILY FEEL AND THAT MAKES THEM A GREAT PLACE FOR YOUR CHILD TO GROW, LEARN AND PLAY. IT'S ALWAYS BEEN THIS WAY AT LITTLE GARDEN AND ALWAYS WILL BE.



# THE IMPORTANT STUFF

## Food for thought

We love food and want to share that with the children in our care. Our menus are healthy and balanced, to fuel children's growth and development, and they're also full of tasty and interesting ingredients and ideas from around the world, to fuel their imaginations and tastebuds.

We spend a lot of time making sure our menus are nutritionally balanced and don't add unnecessary sugar or salt, but most of all, we make sure every dish tastes great and we encourage children to try new things. All our food is made freshly on-site by our chef, breakfast, lunch and tea. We're happy to cater for all dietary requirements, including allergies and cultural needs, and there is always a vegetarian option.

### Babies and weaning

We work closely with parents to make sure it's an easy transition from milk feeds to solid feeds.

## Our team

Our people are a passionate lot, united in creating something really special and different. Each of our nurseries has a lovely family feel and that makes them a great place for your child to grow, learn and play.

It's always been this way at Little Garden and always will be. We all love working with children, believe in what we do and have a lot of fun doing it. In return for their hard work, enthusiasm and dedication, we take care of our people.

We nurture their training and professional development so they're always up to date on childcare issues and best practice, and we give them a great package of benefits.

We also recognise and reward their achievements, and go the extra mile to say thank you. That means your child will always be in safe and capable hands, around happy, warm and naturally friendly grown-ups. All our nurseries are registered and regularly inspected by Ofsted, and staffing levels for all ages often exceed their requirements.

We genuinely empower our people and actively promote equal opportunities.

## Settling in

Starting nursery is a big step, so we'll do all we can to help your child settle in positively, happily and confidently.

We'll get to know them and what they like and don't like. We'll also make sure they get to know us and the other children here. We'll give you plenty of time to settle in, so both you and your child can get used to life here. We'll also make sure your child has a key carer, so they have someone they feel happy, confident and secure with when you're not around.

Settling in is unique to each child, so we'll tailor a plan to suit your child's needs. We find it works best to start with small visits, and then gradually extend them, until your child is happy to be here for as long as you need them to be in our care. Settling in can take time and commitment but don't worry, we're here to support you and your child every step of the way. If possible, we suggest you allow at least a week to settle in with your child, before you leave them with us.

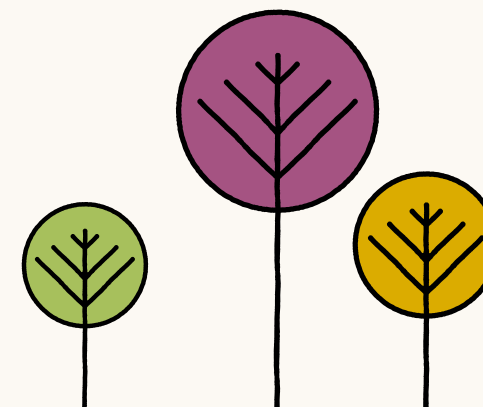
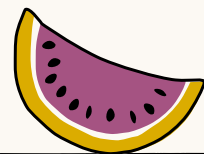
## Working Together

### With parents and carers...

We believe in working closely with families and carers to provide the best possible care and education for each child. To help build a strong, supportive relationship between family life and nursery, your child will have a key carer, so you can both develop a strong bond with one of our people. This will be someone you can talk to and ask for help and support, who knows you, your child and your unique situation. Our door is always open, any time of day, and we welcome your thoughts and feedback.

## Quality shines through

We have a robust Quality Assurance policy in place to help us continuously improve and evolve our services, including care and education, health and safety, management, and people and partnerships.



# SAFETY IN THE NURSERY

## Safety first

At Little Garden nurseries, we follow our Health and Safety Policy and Procedures to ensure we are working in line with best practice for the safety of all our children, staff, and parents. Whilst it is impossible to eliminate all risk, we ensure our practitioners are continually trained in this area to allow children to grow, develop and take appropriate risks through play.

The nursery is cleaned throughout the day, practitioners use aprons and disposable gloves when changing nappies and our toys are cleaned/washed and sterilised regularly.

During the Coronavirus pandemic we sought expert advice from an Infection Control Specialist, who now continually reviews our policies and procedures to ensure ongoing best practice.

"OUR PRIORITY IS THE SAFETY AND WELLBEING OF ALL OUR STAFF, CHILDREN AND PARENTS AT ALL TIMES. THE FEEDBACK FROM PARENTS HAS BEEN EXTREMELY POSITIVE AND SUPPORTIVE, AND WE WANTED TO SHARE OUR APPROACH TO 'WORKING SAFELY AND SMART' SO THAT OTHER PARENTS ELSEWHERE, WHO MAY BE WORRIED ABOUT THEIR OWN CHILDREN RETURNING TO NURSERY OR SCHOOL, CAN SEE THAT LIFE CAN GET BACK TO NORMAL."

**Dianne Lumsden-Earle**  
Chief Childcare Officer





# NURTURE, CARE, INSPIRE.

The New Barnet Day Nursery & Pre-School,  
54 Station Rd, New Barnet, Barnet EN5 1QG

**T:** 0207 622 0484

**E:** [csa@lgnurseries.com](mailto:csa@lgnurseries.com)

**[lgnurseries.com](http://lgnurseries.com)**



Part of the  
**FAMILY FIRST** group

